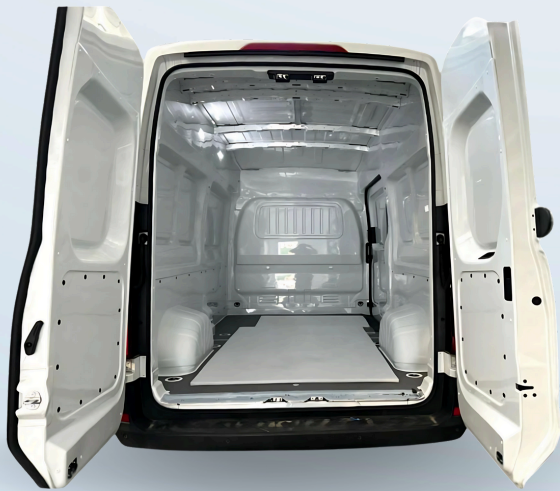


Maxus Deliver 9



Fields of Application



Product Features

- 100% HACCP compliant
- Made of preformed panels installed on the vehicle walls
- No modifications to structural parts; panel weight remains within 5% of the vehicle's curb weight
- No need to update the vehicle registration documents
- Panels can be individually replaced in case of damage or accident
- Access to lights and other components is preserved, allowing easy maintenance
- The kit is removable and transferable to another identical vehicle
- Full payload capacity and cargo volume are maintained
- Waterproof
- Easy to clean, including with pressure washers and steam machines
- Resistant to disinfectants

Accessories & Options

- Reinforced Floor
- Modular Load Shelves
- Temperature Control System for the Cargo Area
- Lightweight PLUS Insulation
- Load Securing System
- Ventilation/Airflow System



Regulations complied with

Complies with HACCP regulations, CE Directive 852/2004 regarding washable, sanitizable surfaces suitable for food contact

Complies with Regulation (EU) 852/2004 ADR regulations for the transport of hazardous materials (certain classes)

Complies with European Guidelines 2013C 343/03 on good distribution practices for human medicines

Complies with UNI ISO 3795:1992 standard for combustion behavior testing



Information Sheet

Material: 100% Recyclable ABS

Panel Thickness: 3/3.5mm

Lightweight Insulation: Optional upon request

Floor: ABS or reinforced polypropylene as an option

Fastening System: With rivets

 **RECOVER** (Also available for electric vehicles.)

Vehicle Variants:



L2H2 (With 1 or 2 side doors)

L3H2 (With 1 or 2 side doors)

L3H3 (With 1 or 2 side doors)

 **CONTACT US**

CAR FIBREGLASS®
van conversion

Via O.Magnani,15|Zona Bassette
48123 Ravenna
Tel. +39 0544 451187
carfibreglass@carfibreglass.com

COVERABS®
HACCP VAN CONVERSION



Learn more about
CARFIBREGLASS.COM

FOLLOW US ON

