



# TRANSPORT OF CORPES



## PRODUCT FEATURES



DOES NOT REQUIRE CHANGES TO THE VEHICLE REGISTRATION



PANEL WEIGHT WITHIN 5% OF THE VEHICLE'S UNLADEN MASS



PRESERVATION OF FULL PAYLOAD CAPACITY AND TOTAL CARGO VOLUME



100% HACCP COMPLIANT



REMOVABLE KIT, TRANSFERABLE TO ANOTHER IDENTICAL VEHICLE



ACCESS TO LIGHTS AND OTHER COMPONENTS IS PRESERVED, ALLOWING EASY EXECUTION OF REGULAR MAINTENANCE.



RESISTANCE TO DISINFECTANTS



INDIVIDUALLY REPLACEABLE PANELS IN CASE OF DAMAGE OR ACCIDENT



WATERPROOF, TOUGH, AND EASY TO CLEAN, EVEN WITH STEAM OR PRESSURE WASHING.

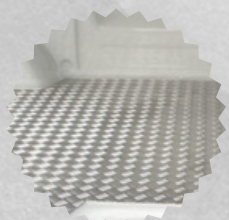


NO MODIFICATION TO STRUCTURAL COMPONENTS



MADE OF PREFORMED PANELS APPLIED TO THE VEHICLE WALLS

## ACCESSORIES & OPTIONS



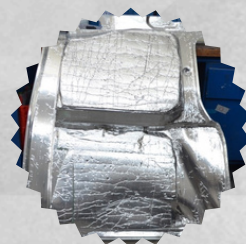
ALUMINUM FLOORING



MODULAR CARGO SHELVING



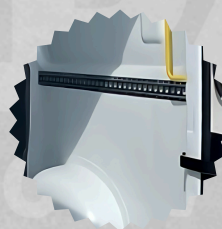
AIR VENTILATION SYSTEM



LIGHTWEIGHT PLUS INSULATION



CARGO AREA TEMPERATURE CONTROL SYSTEM



LOAD SECURING SYSTEM



# APPLICABLE REGULATIONS




**COMPLIANT WITH THE EUROPEAN GOOD DISTRIBUTION PRACTICE (GDP) GUIDELINES 2013/C 343/01 FOR HUMAN MEDICINAL PRODUCTS**



**COMPLIANT WITH EU REGULATION 852/2004 AND ADR STANDARDS FOR THE TRANSPORT OF HAZARDOUS MATERIALS (SPECIFIC CLASSES).**



**COMPLIANT WITH EU GUIDELINES 2013/C 343/03 ON GOOD DISTRIBUTION PRACTICES (GDP) FOR MEDICINAL PRODUCTS FOR HUMAN USE.**



**COMPLIANT WITH UNI ISO 3795:1992 STANDARD FOR THE DETERMINATION OF BURNING BEHAVIOR.**



# TRANSPORT-SPECIFIC OPTIONS



ALUMINUM FLOORING  
 ADDITIONAL LED LIGHTING  
 COFFIN SLIDE RAIL  
 REINFORCED METAL SHELF

CARGO SECURING SYSTEMS  
 SECOND COFFIN SLIDING TRAY

“ **AVAILABLE IN GREY, CREAM, OR WHITE, OUR ABS ADAPTS PERFECTLY TO BOTH THE AESTHETIC AND FUNCTIONAL REQUIREMENTS OF YOUR SETUP!** ”

# PRODUCT RANGE

