



HACCP TRANSPORT



PRODUCT FEATURES



DOES NOT REQUIRE CHANGES TO THE VEHICLE REGISTRATION



PANEL WEIGHT WITHIN 5% OF THE VEHICLE'S UNLADEN MASS



PRESERVATION OF FULL PAYLOAD CAPACITY AND TOTAL CARGO VOLUME



100% HACCP COMPLIANT



REMOVABLE KIT, TRANSFERABLE TO ANOTHER IDENTICAL VEHICLE



ACCESS TO LIGHTS AND OTHER COMPONENTS IS PRESERVED, ALLOWING EASY EXECUTION OF REGULAR MAINTENANCE.



RESISTANCE TO DISINFECTANTS



INDIVIDUALLY REPLACEABLE PANELS IN CASE OF DAMAGE OR ACCIDENT



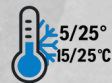
WATERPROOF, TOUGH, AND EASY TO CLEAN, EVEN WITH STEAM OR PRESSURE WASHING.



NO MODIFICATION TO STRUCTURAL COMPONENTS

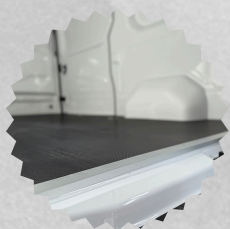


MADE OF PREFORMED PANELS APPLIED TO THE VEHICLE WALLS

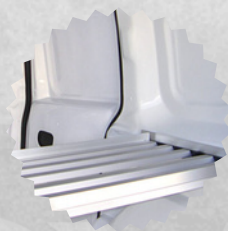


CONTROLLED TEMPERATURE RANGE

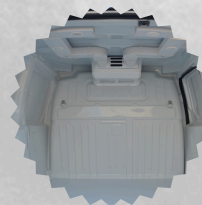
ACCESSORIES & OPTIONS



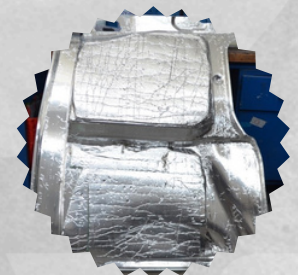
REINFORCED FLOORING



MODULAR CARGO SHELVES



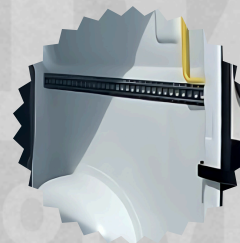
AIR VENTILATION SYSTEM



LIGHTWEIGHT **PLUS** INSULATION



CARGO AREA TEMPERATURE CONTROL SYSTEM




LOAD SECURING SYSTEM



APPLICABLE REGULATIONS




COMPLIANT WITH THE EUROPEAN GOOD DISTRIBUTION PRACTICE (GDP) GUIDELINES 2013/C 343/01 FOR HUMAN MEDICAL PRODUCTS



COMPLIANT WITH EU REGULATION 852/2004 AND ADR STANDARDS FOR THE TRANSPORT OF HAZARDOUS MATERIALS (SPECIFIC CLASSES).



COMPLIANT WITH EU GUIDELINES 2013/C 343/03 ON GOOD DISTRIBUTION PRACTICES (GDP) FOR MEDICINAL PRODUCTS FOR HUMAN USE.



COMPLIANT WITH UNI ISO 3795:1992 STANDARD FOR THE DETERMINATION OF BURNING BEHAVIOR.



“OUR ABS LINING IS DESIGNED TO MEET BOTH THE AESTHETIC AND FUNCTIONAL REQUIREMENTS OF YOUR CONFIGURATION.”

PRODUCT RANGE



HACCP VAN CONVERSION